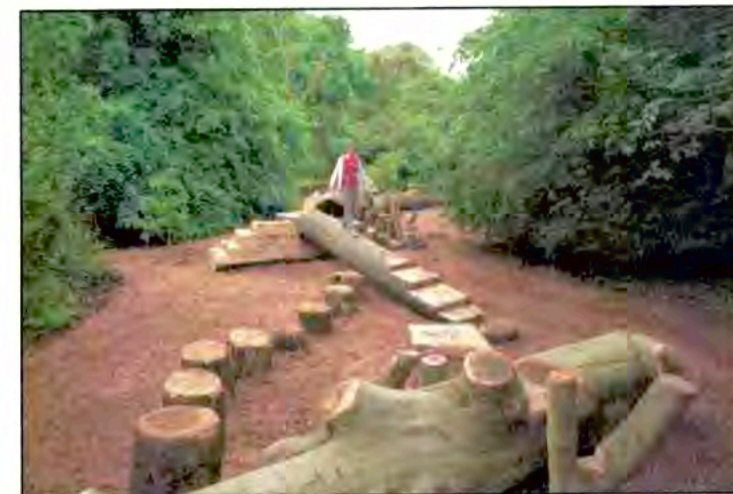




Grain Bin Gazebo



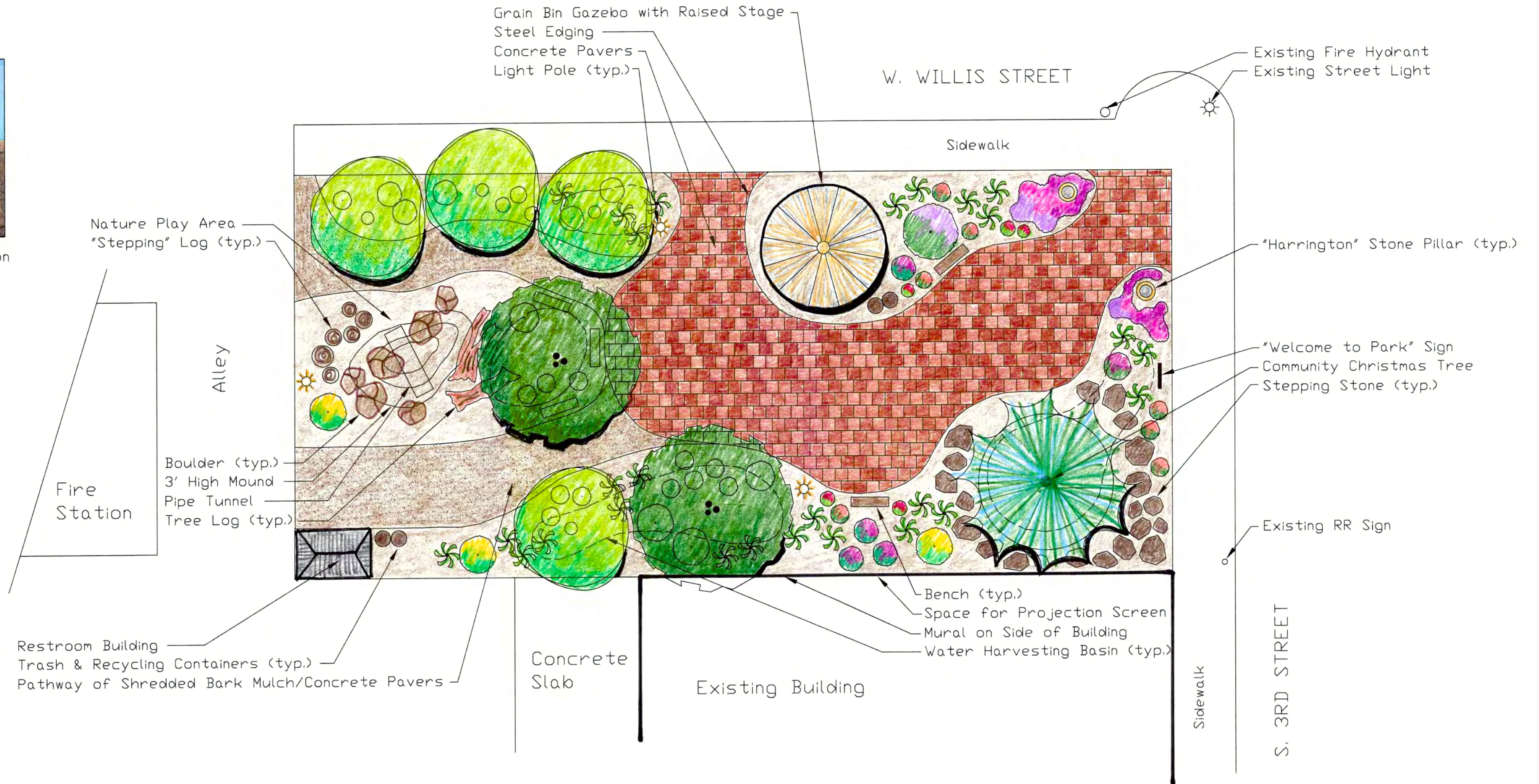
Harrington Pillar



Nature Play Area



Nature Play Area



PROJECT PHASING

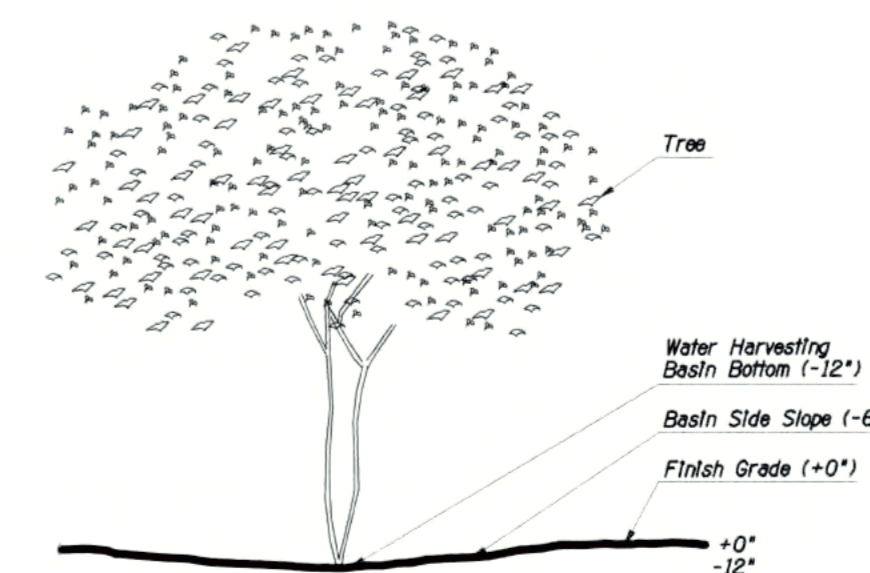
- Phase 1: Site grading, including water harvesting basins; electrical and water stub-outs; trees, shrubs, and other plantings, including Community Christmas Tree; Nature Play Area; "Welcome to Park" sign; fine bark mulch for plaza and pathways; coarse bark mulch for planting areas; mural; benches; trash and recycling containers; projector screen
- Phase 2: Grain Bin Gazebo; pavers and metal edging for plaza; Harrington stone pillars, stepping stones, light poles
- Phase 3: Restroom building; pavers in front of restroom building

PLANT PALETTE

SYMBOL	BOTANICAL NAME	COMMON NAME	SYMBOL	BOTANICAL NAME	COMMON NAME
TREES					
	<i>Abies concolor</i>	White Fir		<i>Acer glabrum</i>	Rocky Mountain Maple
	<i>Cercis orbiculata</i>	Western Redbud		<i>Gleditsia triacanthos</i>	Thornless Honeylocust
	<i>Picea pungens</i>	Colorado Spruce		<i>Quercus garryana</i>	Garry Oak
SHRUBS					
	<i>Arctostaphylos uva-ursi</i>	Bearberry		<i>Cornus stolonifera</i>	Red-osier Dogwood
	<i>Pachystima myrsinites</i>	Myrtle Boxwood		<i>Prunus virginiana</i>	Chokecherry
	<i>Rhus glabra</i>	Smooth Sumac		<i>Salvia dorrii</i>	Purple Sage
	<i>Syringa vulgaris</i>	Lilac			
HERBACEOUS PERENNIALS					
	<i>Asclepias tuberosa</i>	Butterfly Weed		Aster species	Fall-blooming Aster
	<i>Bergenia cordifolia</i>	Heartleaf Bergenia		<i>Centranthus ruber</i>	Red Valerian
	<i>Eriogonum umbellatum</i>	Sulphur Buckwheat		<i>Iris germanica</i>	Bearded Iris
	<i>Paeonia species</i>	Peony		<i>Penstemon species</i>	Penstemon 'Ed Warner'
	<i>Rudbeckia hirta</i>	Gloriosa Daisy			
GRASSES					
	<i>Helictotrichon sempervirens</i>	Blue Oat Grass		<i>Koeleria cristata</i>	Prairie June Grass
	<i>Miscanthus sinensis</i>	Maiden Grass (dwarf forms)		<i>Pennisetum alopecuroides</i>	Fountain Grass (dwarf forms)
	<i>Sesleria autumnalis</i>	Moor Grass (dwarf forms)			

NOTES:

- Electrical service shall be provided to the grain bin gazebo, light poles, Community Christmas Tree, and restroom building.
- Water service shall be provided to several locations throughout the park, either by quick coupler valve or hose bibb.



WATER HARVESTING BASIN

Not to Scale



REV	DATE	BY	DESCRIPTION

CONCEPTUAL PLAN

DESIGNED BY: JLM
DRAWN BY: JLM
CHECKED BY: JLM
APPROVED BY: [Signature]
SCALE: 1" = 10'-0"
DATE: August 2018

DRAWING NO:
REVISION:

CONTRACT NO:
SHEET NO: LC-1